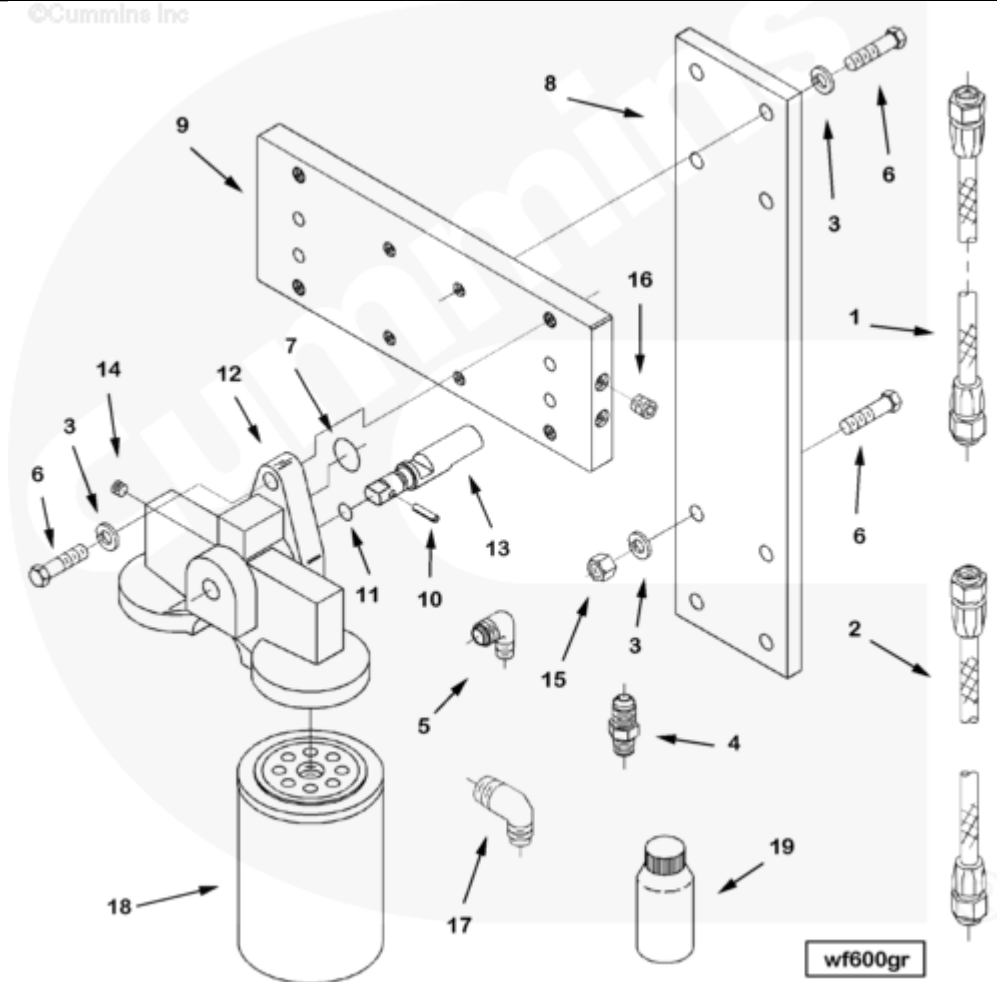




## Parts Catalog - Option Detail

Electronic Parts Catalog - Option Detail				
Option	Group	Graphic	Film Card	Date
WF6005-06	08.08	wf600gr	K38	01-JAN-02
<b>Engines</b>	GTA38, K38, KTA38GC CM558, QSK38 CM2150 K106, QSK38 CM2150 MCRS, QSK38 CM850 MCRS			



SMALL | MEDIUM | LARGE

Cart	Ref No	Part Number	Part Description	Required	Remarks
View My Cart					
		WF6005-06	Corrosion Resistor		<a href="#">Dual DC4 corrosion resistors...(More)</a>
					with dual replaceable spin-on
					cartridges, assembled to the
					manifold and mounting plate.

					Supplied in the kit.
					Includes fittings and hoses
					for customer mounting to
					customer supplied subbase.
					Includes resistor cartridges
					5.3inches in length. Sized
					for cooling systems between
					192 quart and 360quart
					capacity for heat exchanger
					cooling systems.
<input type="checkbox"/>	1	<a href="#">3634300</a>	Flexible Hose	1	
<input type="checkbox"/>	2	<a href="#">3634303</a>	Flexible Hose	1	
<input type="checkbox"/>	3	<a href="#">S 604</a>	Lock Washer	12	3/8 in.
<input type="checkbox"/>	4	<a href="#">S 1039 A</a>	Male Connector	1	
<input type="checkbox"/>	5	<a href="#">S 1040 A</a>	Male Adapter Elbow	2	
<input type="checkbox"/>	6	<a href="#">108707</a>	Hexagon Head Cap Screw	12	3/8 - 16 x 1 1/2 in.
<input type="checkbox"/>	7	<a href="#">145528</a>	O-Ring Seal	4	
<input type="checkbox"/>	8	<a href="#">3003470</a>	Corrosion Resistor Bracket	1	
<input type="checkbox"/>	9	<a href="#">3004845</a>	Water Manifold	1	
<input type="checkbox"/>		<a href="#">3175452</a>	Corrosion Resistor Head	2	
<input type="checkbox"/>	10	<a href="#">8306</a>	Roll Pin	2	
<input type="checkbox"/>	11	<a href="#">70415</a>	O-Ring Seal	2	
<input type="checkbox"/>	12	<a href="#">3175453</a>	Corrosion Resistor Head	2	
<input type="checkbox"/>	13	<a href="#">3177040</a>	Shut-Off Valve Shaft	1	
<input type="checkbox"/>	14	<a href="#">3628604</a>	Pipe Plug	3	1/8 - 27 X 0.3 in.
<input type="checkbox"/>	15	<a href="#">3201128</a>	Regular Hexagon Nut	4	3/8 - 16 UNC.
<input type="checkbox"/>	16	<a href="#">3628605</a>	Pipe Plug	2	1/4 - 18.
<input type="checkbox"/>	17	<a href="#">3629496</a>	Male Adapter Elbow	1	
<input type="checkbox"/>	18	<a href="#">3100308</a>	Corrosion Resistor	4	Buy from Cummins Filtration
<input type="checkbox"/>	19	<a href="#">3888312</a>	Corrosion Inhibitor	6	Buy from Cummins Filtration

